

Ring types

01.08.17

Cambridge – Lenient



Diameter: 450 mm w/3 spokes
 510 mm w/3, 5 or 8 spokes “NG”
 560 mm w/5 or 9 spokes “NG”
 620 mm w/5 or 10 spokes “NG”

The great movability of the breaker ring guarantees an efficient self-cleaning. Especially efficient for rolling down stones. The rounded profile is lenient to sprouting plants. Good for breaking of clods and packing of the surface around the seed.

| Type | Item No. | Axle Diameter | Weight/ Each | Weight/ Set |
|---|-----------|---------------|--------------|-------------|
| Breaker ring 450 mm | 690150040 | 60 mm | 9.50 kg | 27.00 kg |
| Cambridge ring 450 mm - 3 spokes | 690150039 | 60 mm | 17.50 kg | |
| Cambridge ring 450 mm, reduced hub 80 mm - 3 spokes | 690150041 | 60 mm | 17.00 kg | |
| Breaker ring 510 mm | 690150032 | 60 mm | 10.50 kg | 30.00 kg |
| Cambridge ring 510 mm - 3 spokes | 690150030 | 60 mm | 19.50 kg | |
| Cambridge ring 510 mm – cast steel - 3 spokes | 690150088 | 60 mm | 19.50 kg | |
| Cambridge ring 510 mm - 5 spokes | 690150103 | 60 mm | 23.30 kg | - |
| Cambridge ring 510 mm, reduced hub 80mm cast steel -3 spokes | 690150087 | 60 mm | 19.80 kg | - |
| Cambridge ring 510 mm, reduced hub 80mm - 5 spokes | 690150105 | 60 mm | 23.30 kg | - |
| Breaker ring 560 mm | 690150102 | 60 mm | 14.40 kg | 40.40 kg |
| Cambridge ring 560 mm - 5 spokes | 690150101 | 60 mm | 26.00 kg | |
| Cambridge ring 560 mm – cast steel - 5 spokes | 690150107 | 60 mm | 26.00 kg | |
| Cambridge ring 560 mm, reduced hub 80mm cast steel- 5 spokes | 690150109 | 60 mm | 24.00 kg | - |
| Breaker ring 620 mm | 690150059 | 60 mm | 16.50 kg | 46.50 kg |
| Cambridge ring 620 mm - 5 spokes | 690150049 | 60 mm | 28.00 kg | |
| Cambridge ring 620 mm – cast steel - 5 spokes | 690150081 | 60 mm | 29.00 kg | |
| Cambridge ring 620 mm, reduced hub 80mm cast steel -5 spokes | 690150082 | 60 mm | 27.50 kg | - |
| Breaker ring 510 mm – ”NG” - 8 spokes | 7375001 | 60 mm | 11.00 kg | - |
| Breaker ring 510 mm – ”NG” cast steel - 8 spokes | 7375013 | 60 mm | 11.00 kg | - |
| Cambridge ring 510 mm – ”NG” - 8 spokes | 7375003 | 60 mm | 23.00 kg | - |
| Cambridge ring 510 mm – ”NG” cast steel - 8 spokes | 7375010 | 60 mm | 23.00 kg | - |
| Cambridge ring 510 mm – reduced hub 80mm -”NG” - 8 spokes | 7375004 | 60 mm | 23.00 kg | - |
| Cambridge ring 510 mm – reduced hub 80mm -”NG”cast steel 8 spokes | 7375008 | 60 mm | 23.00 kg | - |
| Breaker ring 560 mm – ”NG” - 9 spokes | 7375000 | 60 mm | 14.00 kg | - |
| Breaker ring 560 mm – ”NG” cast steel - 9 spokes | 7375012 | 60 mm | 14.00 kg | - |
| Cambridge ring 560 mm – ”NG” - 9 spokes | 7375005 | 60 mm | 26.00 kg | - |
| Cambridge ring 560 mm – ”NG” cast steel - 9 spokes | 7375009 | 60 mm | 26.00 kg | - |
| Cambridge ring 560 mm – reduced hub 80mm – ”NG” - 9 spokes | 7375007 | 60 mm | 26.00 kg | - |
| Cambridge ring 560 mm – reduced hub 80mm - ”NG” cast steel 9 spokes | 7375011 | 60 mm | 26.00 kg | - |

| | | | | |
|--|-----------|-------|----------|---|
| Breaker ring 620 mm – “NG” - 10 spokes | 690150067 | 60 mm | 17.00 kg | - |
| Breaker ring 620 mm – “NG” cast steel - 10 spokes | 690150116 | 60 mm | 17.00 kg | - |
| Cambridge ring 620 mm – “NG” - 10 spokes | 690150113 | 60 mm | 30.00 kg | - |
| Cambridge ring 620 mm – “NG” cast steel - 10 spokes | 7375016 | 60 mm | 30.00 kg | - |
| Cambridge ring 620 mm – reduced hub 80mm, “NG”- 10 spokes | 690150111 | 60 mm | 29.50 kg | - |
| Cambridge ring 620 mm–reduced hub 80mm, “NG”cast steel 10 spokes | 7375015 | 60 mm | 30.00 kg | - |
| | | | | |
| Cambridge ring 450 mm, finished hub 82mm - 3 spokes | 630764020 | 60 mm | 17.00 kg | - |
| Cambridge ring 450 mm, finished hub 72mm - 3 spokes | 630764021 | 60 mm | 16.80 kg | - |
| Cambridge ring 510 mm, finished hub 82mm cast steel-3 spokes | 630764030 | 60 mm | 18.80 kg | - |
| Cambridge ring 510 mm, finished hub 82mm - 5 spokes | 630764034 | 60 mm | 22.60 kg | - |
| Cambridge ring 510 mm, finished hub 82 mm “NG” - 8 spokes | 7375020 | 60 mm | 22.40 kg | - |
| Cambridge ring 510 mm, finished hub 82 mm“NG”cast steel 8 spokes | 7375026 | 60 mm | 22.40 kg | - |
| Cambridge ring 510 mm, finished hub 72mm cast steel-3 spokes | 630764031 | 60 mm | 19.60 kg | - |
| Cambridge ring 510 mm, finished hub 72mm - 5 spokes | 630764037 | 60 mm | 22.30 kg | - |
| Cambridge ring 510 mm, finished hub 72 mm “NG” - 8 spokes | 7375019 | 60 mm | 22.20 kg | - |
| Cambridge ring 510 mm, finished hub 72 mm“NG”cast steel 8 spokes | 7375025 | 60 mm | 22.20 kg | - |
| Cambridge ring 560 mm, finished hub 82mm cast steel-5 spokes | 630764038 | 60 mm | 25.40 kg | - |
| Cambridge ring 560 mm, finished hub 82mm “NG” - 9 spokes | 7375018 | 60 mm | 25.90 kg | - |
| Cambridge ring 560 mm, finished hub 82mm“NG”cast steel 9 spokes | 7375024 | 60 mm | 25.90 kg | - |
| Cambridge ring 560 mm, finished hub 72mm cast steel-5 spokes | 630764039 | 60 mm | 25.20 kg | - |
| Cambridge ring 560 mm, finished hub 72mm “NG - 9 spokes | 7375017 | 60 mm | 25.70 kg | - |
| Cambridge ring 560 mm, finished hub 72mm “NG”cast steel 9 spokes | 7375023 | 60 mm | 25.70 kg | - |
| Cambridge ring 620 mm, finished hub 82mm cast steel-5 spokes | 630764047 | 60 mm | 30.30 kg | - |
| Cambridge ring 620 mm, finished hub 82 mm “NG” - 10 spokes | 630764050 | 60 mm | 29.00 kg | - |
| Cambridge ring 620 mm, finished hub 82mm“NG”cast steel 10 spokes | 7275022 | 60 mm | 29.50 kg | - |
| Cambridge ring 620 mm, finished hub 72mm cast steel-5 spokes | 630764048 | 60 mm | 30.30 kg | - |
| Cambridge ring 620 mm, finished hub 72mm “NG” - 10 spokes | 630764049 | 60 mm | 29.50 kg | - |
| Cambridge ring 620 mm, finished hub 72mm“NG”cast steel 10 spokes | 7375021 | 60 mm | 29.00 kg | - |

Following reducing bushes used for machines with $\varnothing 50$ mm axle:

| Type | Item No. | Weight/Each | Dimension |
|---------------|-----------|-------------|--|
| Reducing bush | 690140817 | 0.6 kg | $\varnothing 60/\varnothing 50$ mm L=103 |
| Reducing bush | 690140816 | 0.9 kg | $\varnothing 60/\varnothing 50$ mm L=150 |
| Reducing bush | 690140819 | 1.0 kg | $\varnothing 60/\varnothing 50$ mm L=165 |
| Reducing bush | 690140820 | 0.3 kg | $\varnothing 60/\varnothing 50$ mm L= 50 |

2D-Corrugated Ring



Diam.: 500 mm w/3 and 5 spokes, 550 mm & 600 mm w/5 spokes. The 2D-Corrugated ring is especially used for rolling of sprouted crops. The rounded shape is very lenient to the plants. The 2D corrugated ring leaves a plane and packed surface.

| Type | Item No. | Axle Dia. | Hub Width | Weight Each |
|---|-----------|-----------|-----------|-------------|
| 2D-Corrugated ring 500mm cast steel, 3 spokes | 690150087 | 60 mm | 80 mm | 19.80 kg |
| 2D-Corrugated ring 500mm, 5 spokes | 690150105 | 60 mm | 80 mm | 23.30 kg |
| 2D-Corrugated ring 550mm cast steel, 5 spokes | 690150109 | 60 mm | 80 mm | 24.00 kg |
| 2D-Corrugated ring 600mm cast steel, 5 spokes | 690150082 | 60 mm | 80 mm | 27.50 kg |

Cambridge – Aggressive



Diameter: 510 mm

The great movability of the serrated ring guarantees an efficient self-cleaning. Especially efficient for rolling down stones. The sharp profile ensures breaking of clods and packing of the surface around the seed.



Diameter: 620 mm

The great movability of the serrated ring guarantees an efficient self-cleaning. Especially efficient for rolling down stones, breaking of clods and packing of the surface around the seed.

| Type | Item No. | Axle Diameter | Weight/Each | Weight/Set |
|---------------------------------------|-----------|---------------|-------------|------------|
| Cambridge ring 510 mm | 690150024 | 60 mm | 21.50 kg | 33.00 kg |
| Breaker ring 510 mm | 690150025 | 60 mm | 11.50 kg | |
| Cambridge ring 620 mm | 690150027 | 60 mm | 23.50 kg | 38.00 kg |
| Breaker ring 620 mm | 690150026 | 60 mm | 14.50 kg | |
| | | | | |
| Plain ring 510 mm, finished hub 82 mm | 630764035 | 60 mm | 21.00 kg | - |
| Plain ring 510 mm, finished hub 72 mm | 630764036 | 60 mm | 20.80 kg | - |
| Plain ring 510 mm, reduced hub 80 mm | 690150038 | 60 mm | 21.00 kg | - |
| Plain ring 620 mm, reduced hub 80 mm | 690150043 | 60 mm | 23.00 kg | - |
| Plain ring 620 mm, finished hub 82 mm | 630764045 | 60 mm | 23.00 kg | - |
| Plain ring 620 mm, finished hub 72 mm | 630764046 | 60 mm | 22.80 kg | - |

Crosskill



Diameter: 485-530 mm / 550-600 mm

Applicable where the roller, beyond ordinary consolidation, is used for land packing and preparation of seedbed too. The relatively open ring packs well in the depth and leaves the surface with a rough structure. Especially efficient in connection with Spring-Board levelling bar as the large diameter of every second ring prevents blocking in very wet conditions.

| Type | Item No. | Axle Dia. | Weight/Each | Weight/Set |
|-----------------------------------|-----------|-----------|-------------|----------------------|
| Crosskill ring 485 mm | 690150034 | 60 mm | 25.50 kg | 56.00 kg (200 mm) |
| Crosskill ring 530 mm | 690150011 | 60 mm | 26.50 kg | |
| Hub Ø104 mm for Crosskill ring | 690150076 | 60 mm | 4.00 kg | |
| Crosskill ring 550 mm | 690150074 | 60 mm | 34.50 kg | 78.00 kg (200 mm) |
| Crosskill ring 600 mm | 690150075 | 60 mm | 39.50 kg | |
| Hub Ø104 mm for Crosskill ring | 690150076 | 60 mm | 4.00 kg | |

Star Ring



Diameter: 450-500 mm / 550-600 mm
The cast steel ring is applicable where the roller, beyond ordinary consolidation, is used for land packing and preparation of seedbed too. The star ring leaves the soil with a loose structured and lighter corrugate-shaped surface. Moreover the star ring is recommended for grassland consolidation.

| Type | Item No. | Axle Dia. | Weight/Each | Weight/Set |
|-----------------------------|-----------|-----------|-------------|------------|
| Star ring 450 mm cast steel | 690150064 | 60 mm | 13.80 | 30.6 kg |
| Star ring 500 mm cast steel | 690150063 | 60 mm | 16.80 | |
| Star ring 550 mm cast steel | 690150066 | 60 mm | 18.90 | 41.0 kg |
| Star ring 600 mm cast steel | 690150065 | 60 mm | 22.10 | |

Cam ring



Diameter: 550 mm
The cam ring is selected for loose mould, and mould mixed with sand, as it pulverises and packs the top soil. It leaves a porous surface thus avoid earth drifts. The ring is also used on clayey soil, where the rough surface structure prevents coverage with mud in case of heavy showers.

| Type | Item No. | Axle Dia. | Hub Width | Weight/Each |
|-----------------|-----------|-----------|-----------|-------------|
| Cam ring 550 mm | 690150007 | 60 mm | 155 mm | 25.00 kg |

V-Profile Ring



600 mm 700 mm

Diameter: 600 mm & 700 mm
Closed steel ring made of 4/5 mm pressed plate and welded together which results in a high strength. Due to this strength the ring is efficient in stony soils. The castellated ring ensures an efficient consolidation of new ploughed soil before seeding. The ring is also used in connection with reduced soil preparation and stubble preparation.

| Type | Item No. | Axle dia. | Hub Width | Weight/Each |
|-------------------------------|-----------|-----------|-----------|-------------|
| V-Profile ring, single 600 mm | 690150036 | 60 mm | 125 mm | 26.50 kg |
| V-Profile ring, twin 600 mm | 690150044 | 60 mm | 210 mm | 55.00 kg |
| V-Profile ring, triple 600 mm | 690150037 | 60 mm | 228,5 mm | 77.00 kg |
| V-Profile ring, single 700 mm | 690150086 | 60 mm | 150 mm | 30.40 kg |

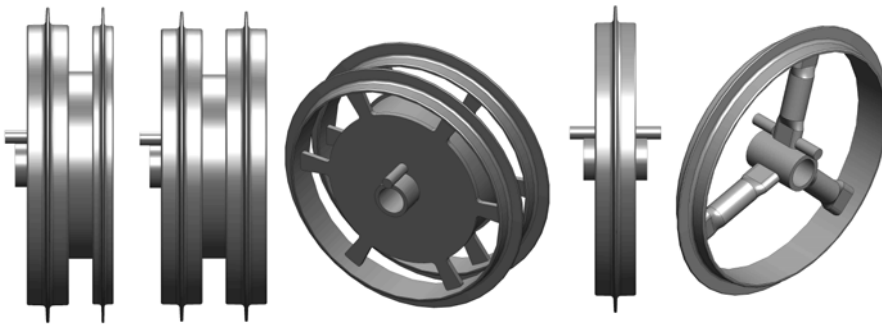
Land Packer Ring



Diameter: 700, 800 and 900 mm
Packing ring 700 mm is used on light to medium-heavy soil.
Packing ring 800 and 900 mm are used on both light, medium-heavy and heavy soil.
The shoulder profile ensures that the ring is lifted up on light soils, but at the same time an efficient cutting of the big clods and sharp furrows on the heavy soil are ensured.

| Type | Item No. | Axle dia. | Hub Width | Weight/Each |
|-------------------------|-----------|-----------|-----------|-------------|
| Land packer ring 700 mm | 690150048 | 60 mm | 150 mm | 32.50 kg |
| Land packer ring 800 mm | 690150015 | 60 mm | 150 mm | 48.50 kg |
| Land packer ring 900 mm | 690150016 | 60 mm | 165 mm | 68.50 kg |

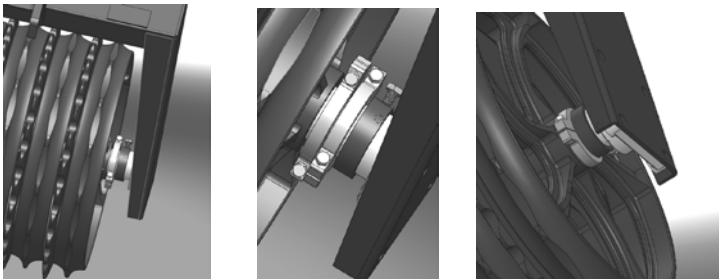
T-Profile Ring



Diameter: 600 mm
The large 600 mm T-profile roller packs the soil efficiently and leaves an efficient cultivation, ensuring an optimal decomposition. The T-Profile ring ensures an ideal consolidation of the soil and control the depth of the machine efficiently on all soil types.

| Type | Item No. | Axle dia. | Hub Width | Weight/Each |
|--|----------|-----------|-----------|-------------|
| T-Profile ring, single 600 mm | 1069111 | 60 mm | 125 mm | 20.41 kg |
| T-Profile ring, twin wide+small 600 mm | 1048100 | 60 mm | 135 mm | 38.50 kg |
| T-Profile ring, twin wide+wide 600 mm | 1048110 | 60 mm | 228.5 mm | 46.00 kg |

Shims for roller rings



| Type | Item No. | Weight/Each |
|---------------------------------|-----------|-------------|
| 15 mm Shim-set w/bolts and nuts | 690150090 | 0.8 kg |
| 20 mm Shim-set w/bolts and nuts | 690150099 | 0.9 kg |
| 25 mm Shim-set w/bolts and nuts | 690150091 | 1.2 kg |